

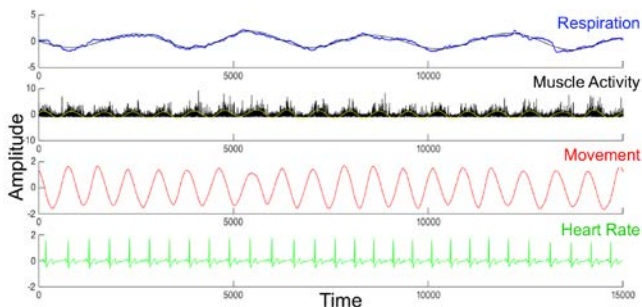
Lab Mission

With two motion capture systems, physiological recording capabilities, a driving simulator, slack line, and weight machine, Dr. Nia Amazeen and Dr. Eric Amazeen created a [research lab](#) that allows for maximal flexibility in the design of research questions and experiments.



Our research focus is on dynamical models of perception, action, and cognition, including physiological processes; motor skills and sport; social and team dynamics; weight perception; and tool use.

Method Development



To understand the very many interactions of a complex system like the human body, we use existing dynamical methods but also develop new ones. **Multiscale Regression Analysis** is a new method that helps us to identify the scale and time course of influence across bodily systems, like the series pictured above.

Check out the [first publication](#) from these collaborators.

ASU: What's it like to live in Arizona?

With 90,000 students, 40+ elite programs, and a ranking of #1 in innovation, [ASU](#) is an academically vibrant place. There's plenty to stay active, including year-round outdoor activities; entertainment venues and museums; all major sports, and an international airport.

[Psychology](#) has over 2400 majors and almost 300 honors students who love to participate in research. Being multidisciplinary, DPAC collaborates with units across the university, including the Center for Social Dynamics and Complexity.

Celebrating 20 years in 2020

DPAC seminar boasts broad participation from faculty and students from all four of ASU's campuses. We are proud to have never repeated a topic over these 20 years, but any participant can rattle off a list of favorites. Two goals are to: (1) read the broad literature required by a dynamical approach to perception, action, and cognition; and (2) hone our critical debate skills. It's just how you always imagined a graduate seminar.



Come join us... All are welcome!

Upcoming Graduate Seminar

PSY 576: Dynamics in Psychology will be offered again during Spring 2020. We welcome students from multiple disciplines across all four of ASU's campuses. The lecture-lab-discussion format allows students to gain hands-on experience with the modeling techniques that they learn in class.

Community Outreach

We are committed to teaching students of all ages about the use of dynamics in psychology.



Our latest visitors were children of refugees from Crockett Elementary School. Check out the [video!](#)

Graduates: Where are they now?

Our three most recent PhDs are all doing research: Justin Fine (Indiana University); Aaron Likens (University of Nebraska - Omaha); and Cameron Gibbons (Phoenix Children's Hospital).

Seeking New PhD Students

[Nia Amazeen](#) is actively recruiting students to begin Fall 2020. Students from multidisciplinary backgrounds are welcome. Positions are fully funded. [Application details](#). deadline 12/5/19. Contact [Nia](#) for additional information.